



# COMPLAN 2030

THE COMPREHENSIVE PLAN FOR THE CITY OF AUBURN

## Public Visioning Meeting

October 13, 2009



# Presentation Summary

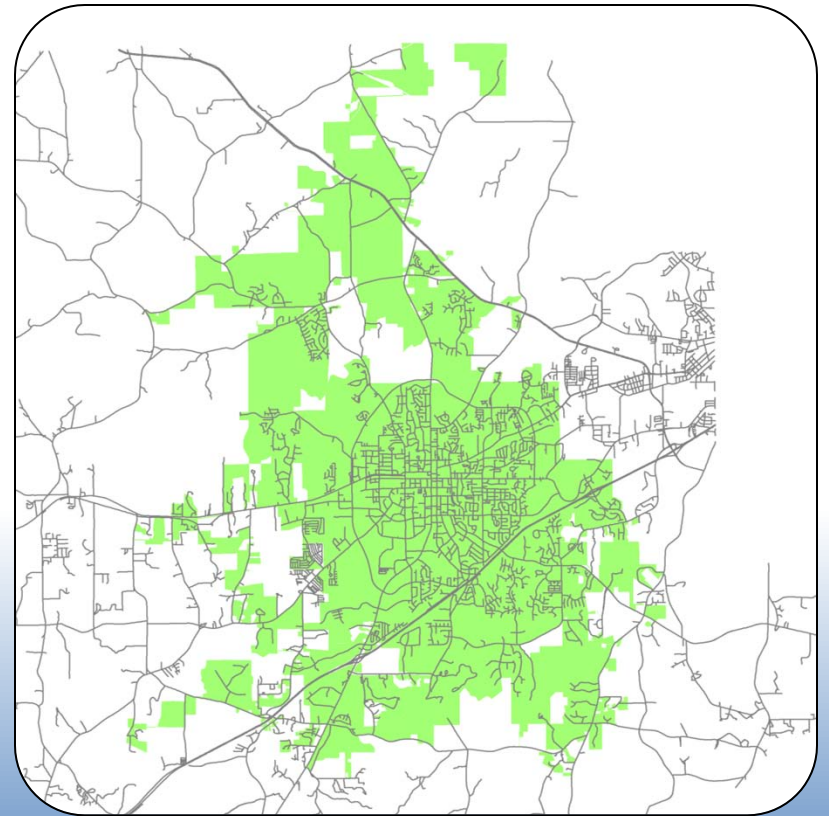
- What is a comprehensive plan?
- Why is comprehensive planning important?
- The importance of a vision
- Current statistics
- Agenda for remainder of evening

# What is a comprehensive plan?

- A comprehensive plan is “a written document that identifies the goals, objectives, principles, guidelines, policies, standards, and strategies for the **growth and development** of the community”

# What is a comprehensive plan?

- A comprehensive plan:
  - Looks at everything related to the physical development of the community
  - Includes all of the land area that is or may be subject to the City's regulatory jurisdiction
  - Has a long-range time horizon



# What is CompPlan 2030?

- CompPlan 2030 is the City of Auburn's comprehensive plan. As a plan, CompPlan 2030:
  - Provides guidance for the future, based on analysis of existing and future conditions, best practices, and Auburn's best vision for itself
  - Gives the aspirations of the community substance and form
  - Provides predictability and fairness for citizens, elected officials, city staff, and the development community
  - Integrates many disparate systems into one harmonious whole



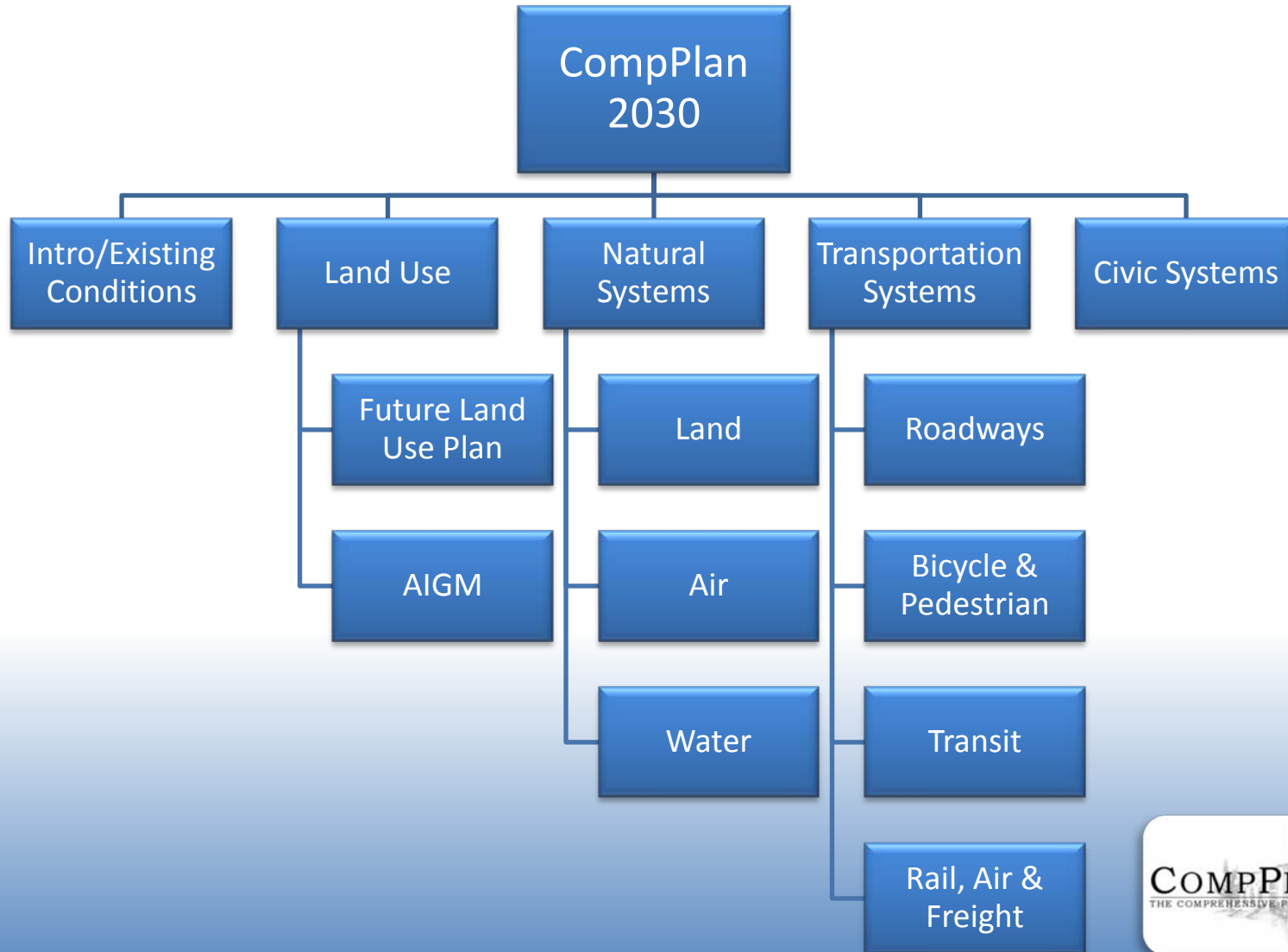
COMPPLAN 2030  
THE COMPREHENSIVE PLAN FOR THE CITY OF AUBURN

# What makes the plan comprehensive?

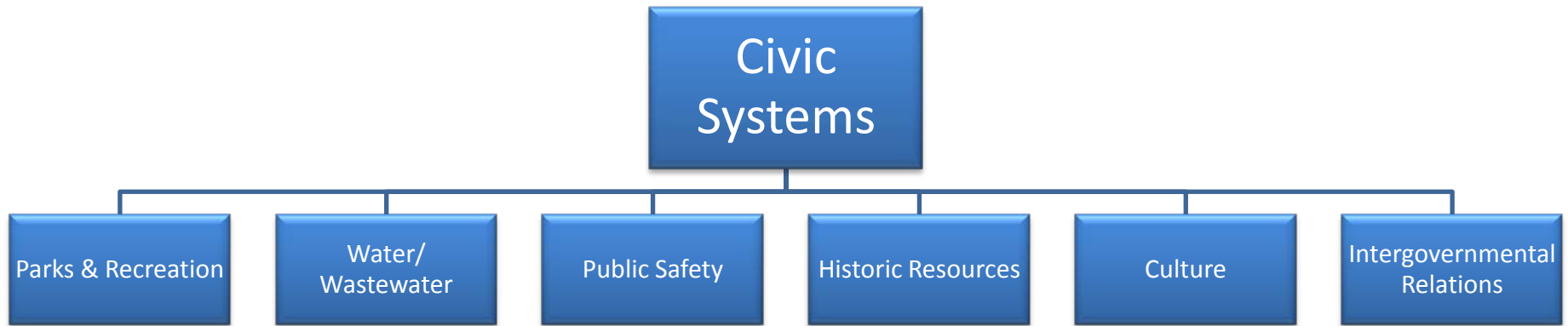
The plan moves from:

- *Acquisition*, in which we gather data on the broad spectrum of existing conditions;
- To *analysis*, in which the information is examined, turned over, and examined again;
- To *awareness*, the end result of successful analysis in which the nature of problems and trends is revealed, connections determined, and goals and objectives stated;
- To *action*, the hard work of making the plan's recommendations more than just words on paper.

# CompPlan 2030 Structure



# CompPlan 2030 Structure: Civic Systems

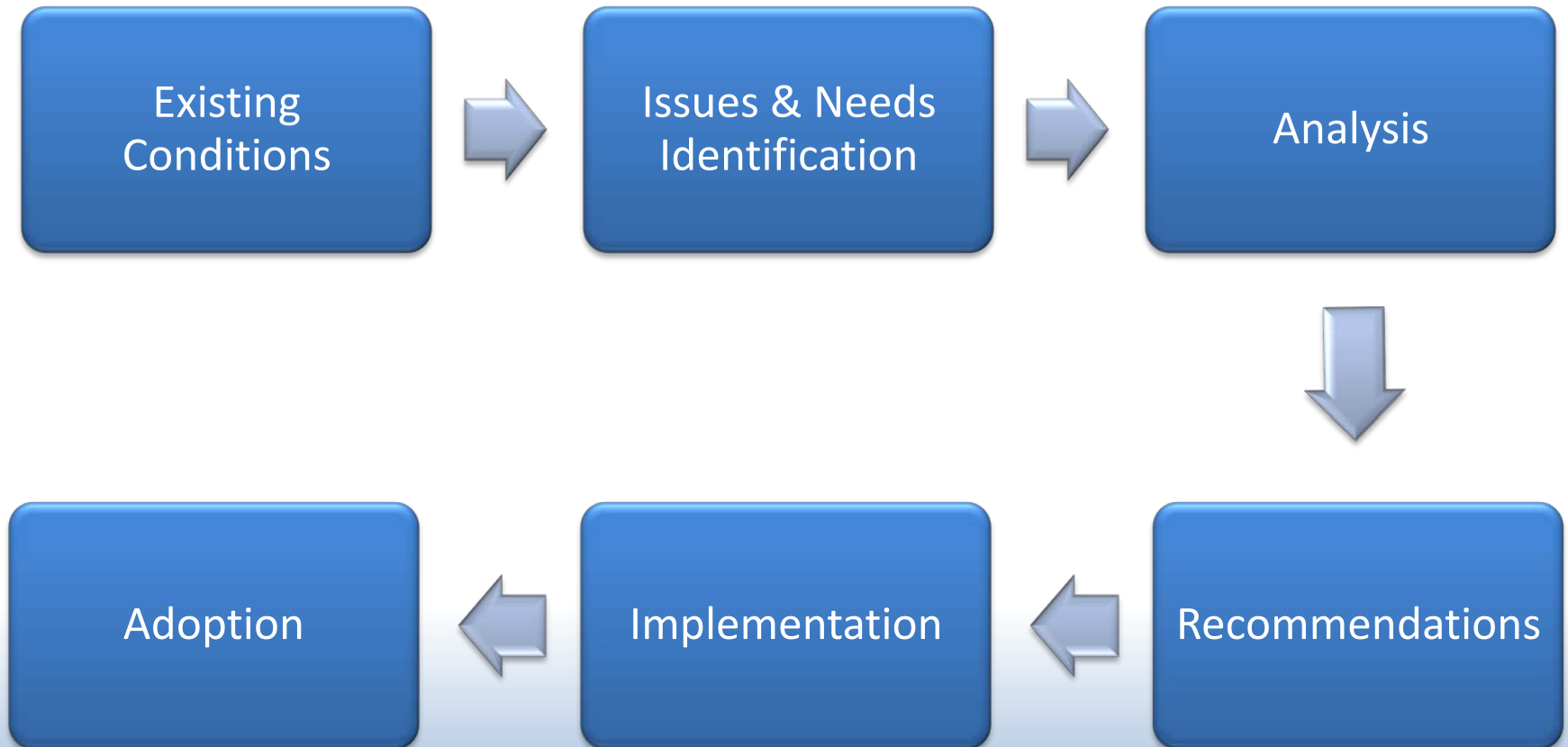




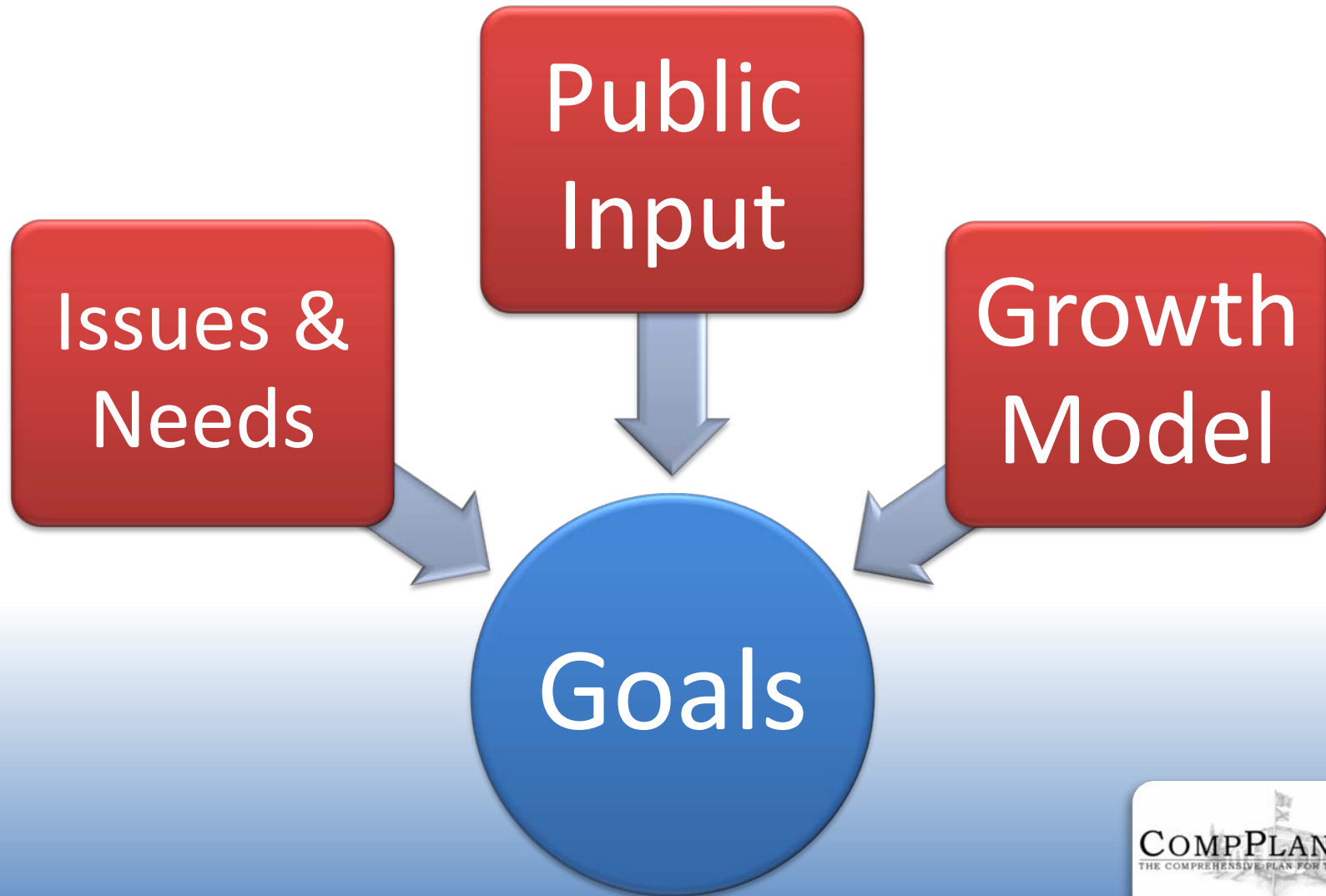
# Typical Outline of a Sub-element

- Introduction
- Existing conditions
- Existing plans
- Analysis
  - Impact on future growth
- Goals & objectives

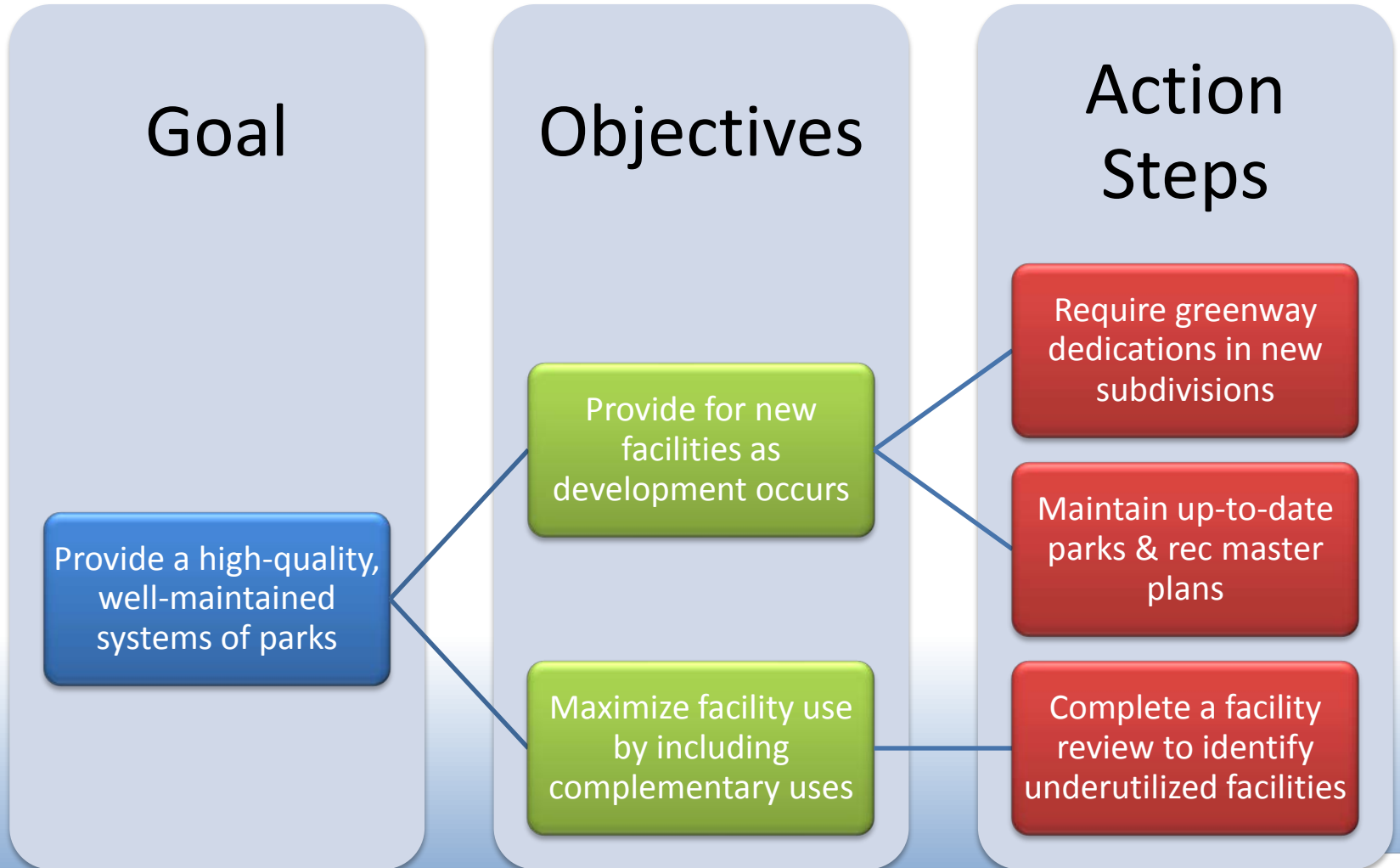
# The CompPlan Process



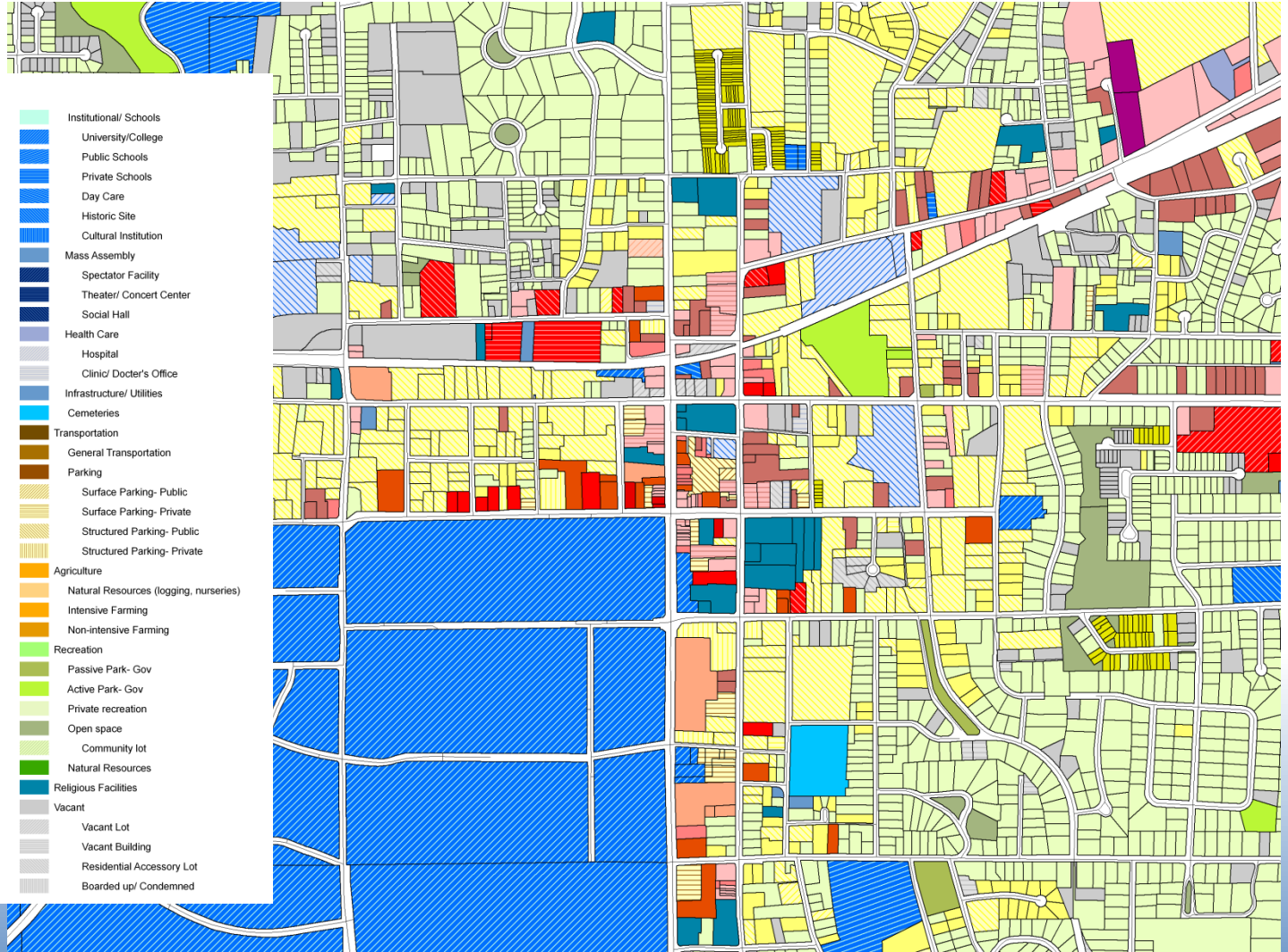
# Forms of input



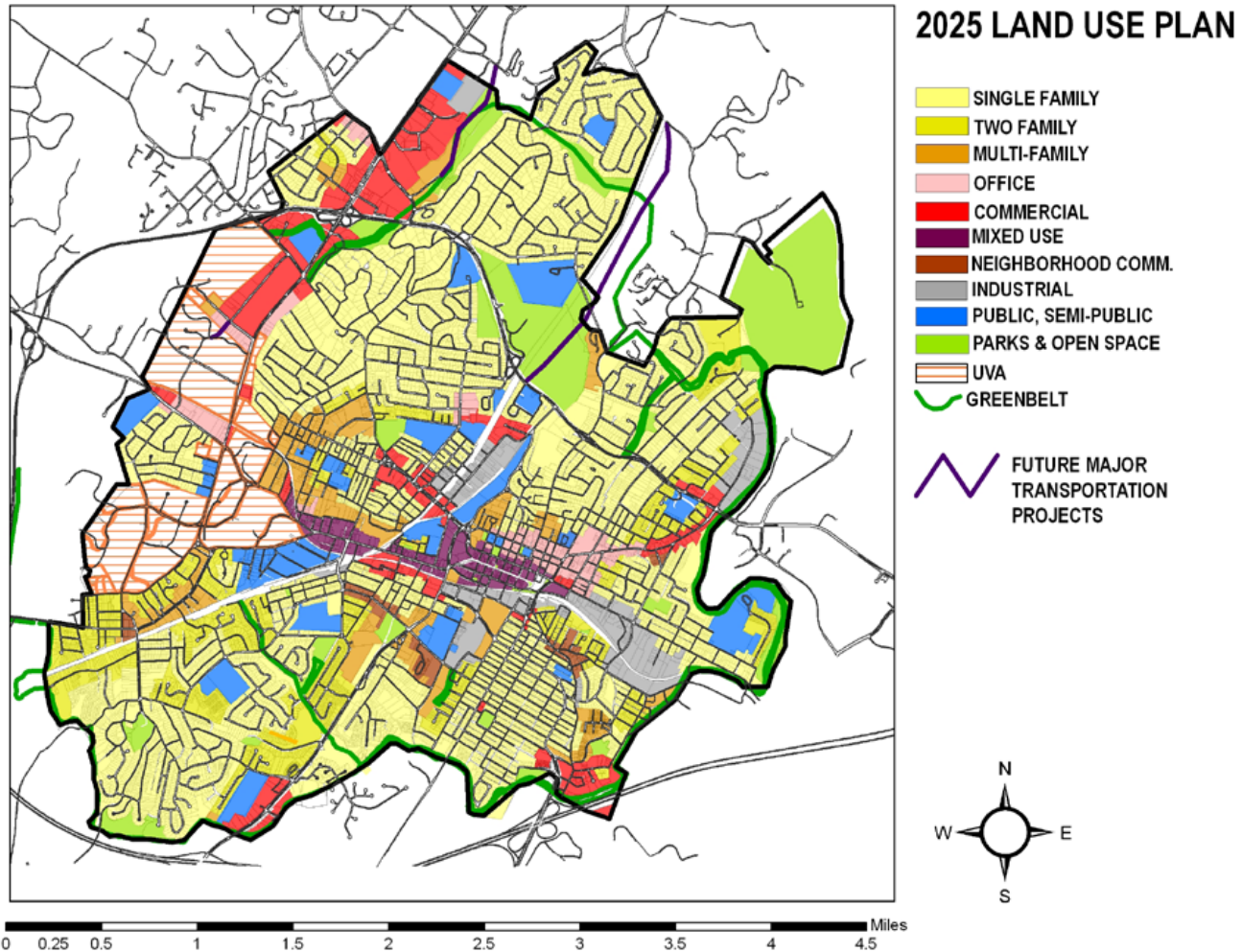
# How recommendations work



# Current Land Use



# Future Land Use Plan



# Why CompPlan 2030 is important

- First comprehensive long-range planning effort in Auburn in over a decade
- Plan will use input from diverse sources:
  - The public
  - Stakeholder groups
  - Quantitative data
  - The best practices of planning
- Recommendations will address broad range of subject areas, from land use and transportation to the natural environment and parks

# Why CompPlan 2030 is important

- If adopted, the plan will be an official policy document of the City
- Future land use plan will help determine the type, location, and scale of new development and associated improvements for the next 20 years
- Recommendations may result in substantial changes to zoning ordinance and subdivision regulations



# Why CompPlan 2030 is important

- The plan coordinates and unifies the dozens of existing plans and other documents that currently guide the City of Auburn.
- Fundamentally, CompPlan 2030 is a plan about good growth. Auburn is a fast-growing community that faces many challenges in the days and years ahead. Because we know we will grow, the question must become: how do we grow, and how do we do it well?

# The importance of a vision

- Great places are not created by accident
- The things we love about places we visit do not have to be exclusive to those places
- Communities make choices everyday about the type of places they will become
- Choices are incremental; it is not always clear what impact a single decision will have
- Many decisions made over time lead us to where we are and will be in the future



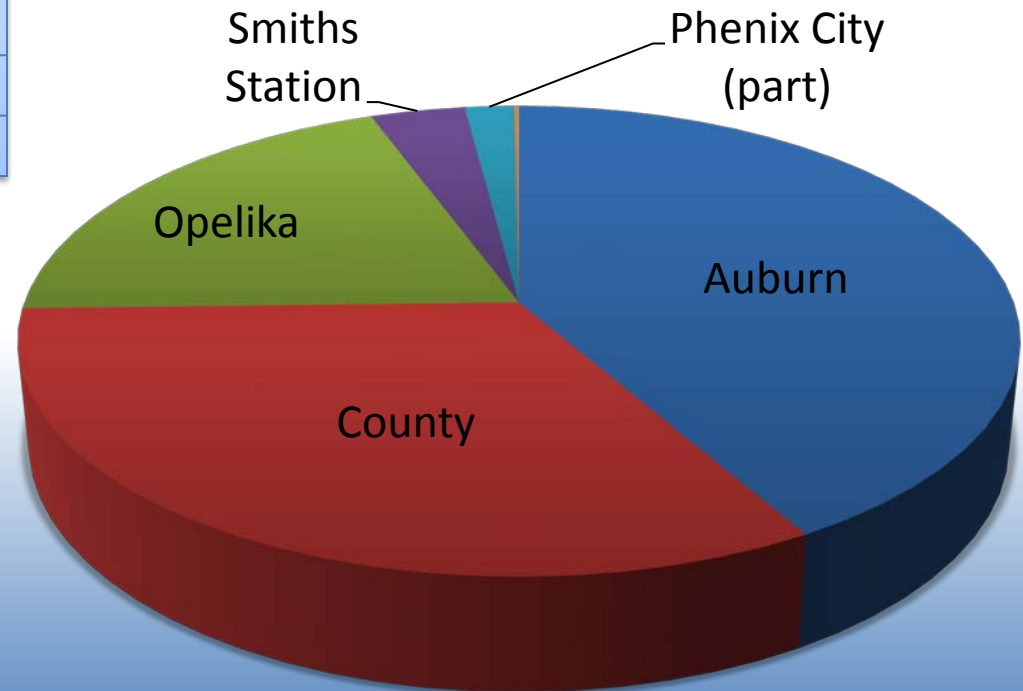
# The importance of a vision

- Visioning is the act of anticipating that which will or may come to be
- A clearly articulated vision about the kind of community we want to be provides us with a roadmap to our destination
- Without a vision, we lack the guidance we need to ensure our incremental choices create the final result we desire
- A vision is not a guarantee of what we will become; it only helps us get there



# Lee County Population by Jurisdiction

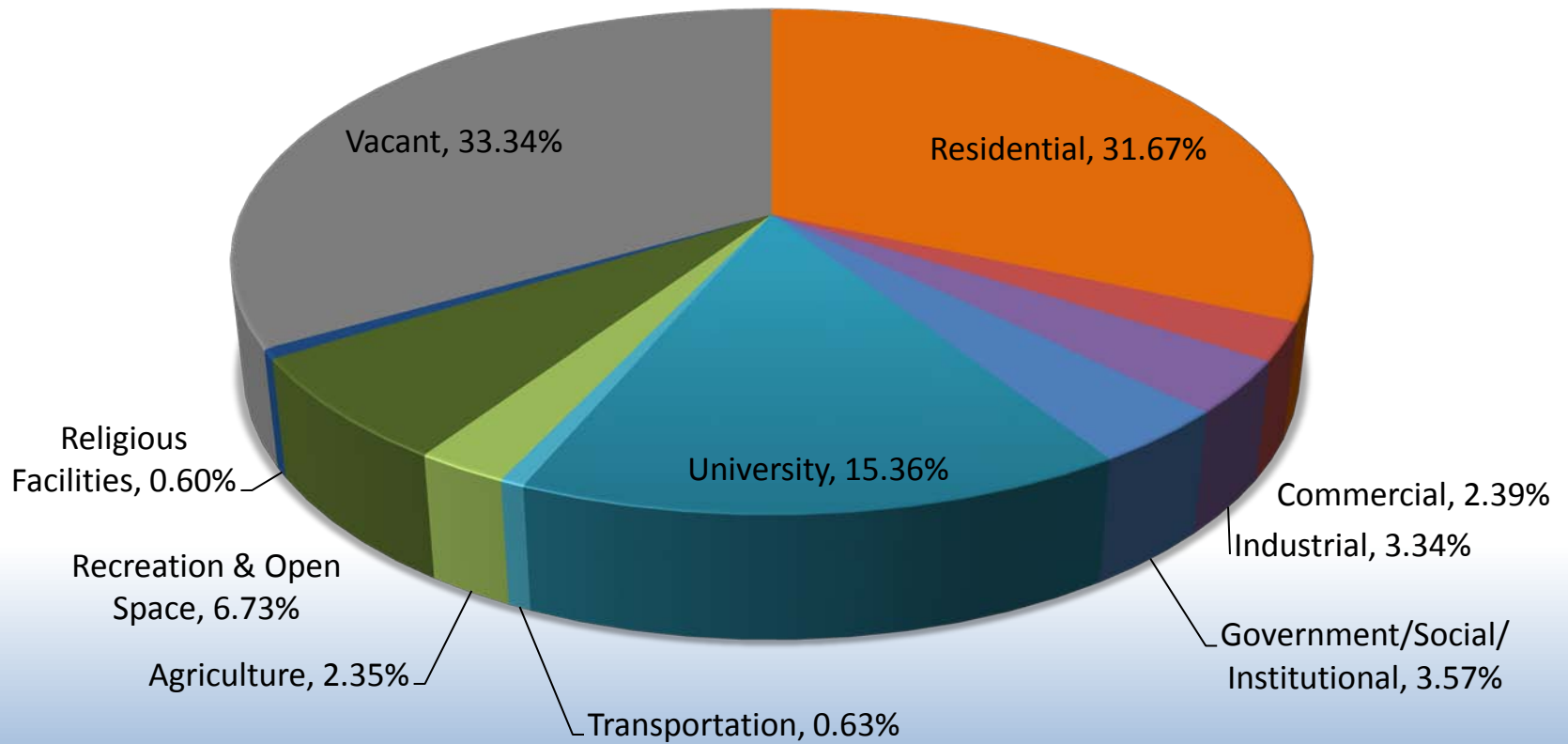
Auburn	<b>54,438</b>	<b>41.71%</b>
Unincorporated Areas	42,923	32.89%
Opelika	25,836	19.80%
Smiths Station	4,652	3.56%
Phenix City (part)	2,430	1.86%
Loachapoka	163	0.12%
Waverly (part)	46	0.04%
Notasulga (part)	28	0.02%



# Population Change

<b>Population Change: 1970 to 2007</b>						
<b>Jurisdiction</b>	1970	1980	1990	2000	2007	% Change
<b>Auburn</b>	<b>22,767</b>	<b>28,471</b>	<b>33,830</b>	<b>42,987</b>	<b>54,348</b>	<b>138.7%</b>
<b>Opelika</b>	19,027	21,869	22,122	23,498	25,836	35.8%
<b>Lee County</b>	61,268	76,283	87,146	115,092	130,516	113%
<b>Alabama</b>	3,444,354	3,894,025	4,040,587	4,447,100	4,627,851	34.4%

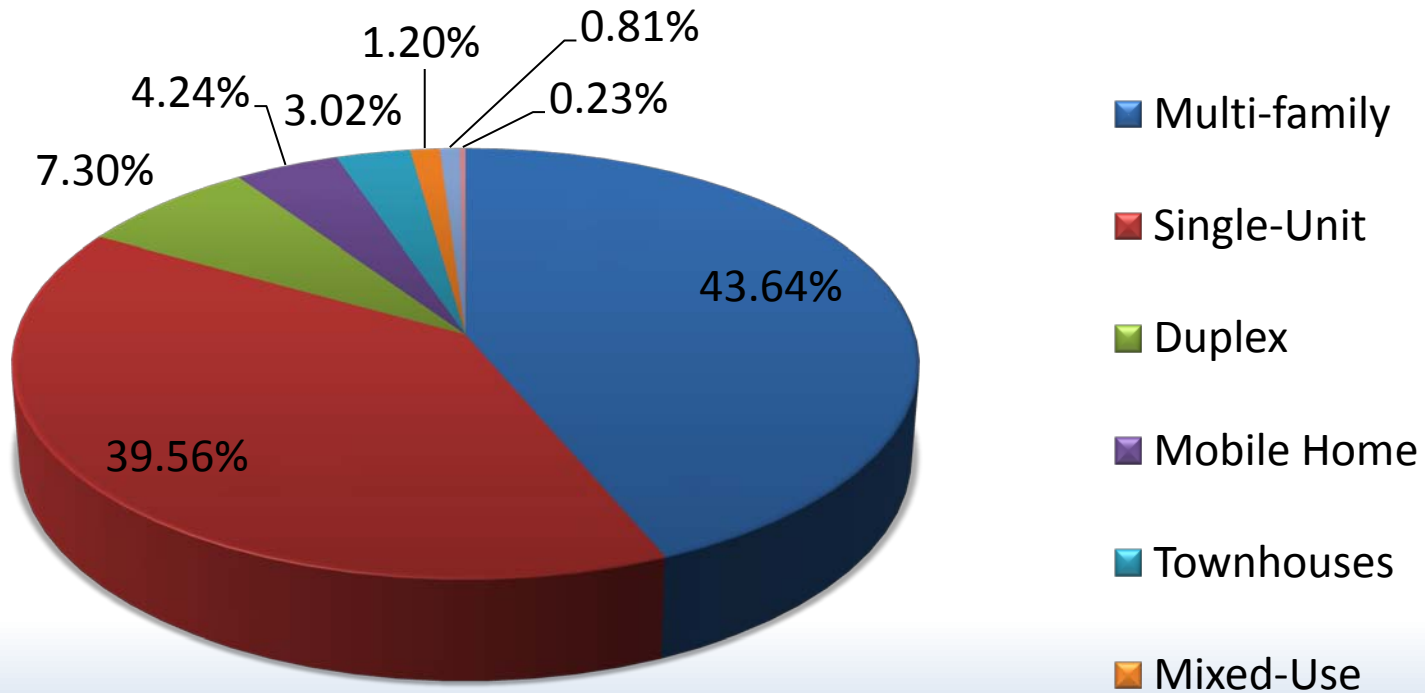
# Land Use by Acreage



# Land Use by Acreage

Type	Acres	% of Total Acres
Residential	11,197	31.67%
Commercial	845	2.39%
Industrial/Manufacturing	1,182	3.34%
Government/Social/Institutional	1,264	3.57%
University	5,432	15.36%
Transportation	224	0.63%
Agriculture	832	2.35%
Recreation & Open Space	2,380	6.73%
Religious Facilities	211	0.60%
Vacant	11,785	33.34%
<b>Total</b>	<b>35,351</b>	

# Housing Units by Type





# Housing Units by Type

Type	Units	% of Total Units
Multi-family	10746	43.64%
Single-Unit	9742	39.56%
Duplex	1797	7.30%
Mobile Home	1045	4.24%
Townhouses	744	3.02%
Mixed-Use	295	1.20%
Dorm - Off-Campus	200	0.81%
Triplex/Quadplex	57	0.23%
<b>Total</b>	<b>24,626</b>	<b>100%</b>

Does not include ~5,000 on-campus capacity or AHA housing

# Your task tonight

- We will be breaking into groups to listen to your ideas for the future of Auburn
- All groups will be answering the same questions
- Don't be afraid to think big
- If you have a current, specific concern (i.e. speeding on your street, you experience flooding when it rains), please ask for a **citizen concern form** and turn it in at the front table when you leave

# Your task tonight

- Your input is important and vital to the success of the plan
- Facilitators are here to record your ideas and to ensure everyone has a chance to participate
- Please fill out a survey before you leave

# Meeting Schedule

Meeting Name	Date/Frequency
Planning Commission Work Session	Start November 2009 / Monthly
Public Meeting #1	October 13, 2009
Joint Planning Commission/Council Meeting	November 10, 2009
<b>Public Meeting #2</b>	<b>February 2010</b>
Joint Planning Commission/Council Meeting	March 2010
<b>Public Meeting #3</b>	<b>October 2010</b>
Joint Planning Commission/Council Meeting	October 2010
Planning Commission Adoption	December 2010
City Council Adoption	January 2011

# Breakout groups

- Your group number is on your name tag
- Groups 1 through 10 will meet in the cafeteria
- Groups 11 through 20, please wait in the auditorium while your tables are arranged

# For more information:

- Call Justin Steinmann at **334-501-3045**
- Visit the CompPlan 2030 website at:  
**[www.auburnalabama.org/compplan2030](http://www.auburnalabama.org/compplan2030)**